

MPI Nijmegen,
DAM-LR kick-off
July 12

The Lund Lab

language by ear, eye and touch

Sven Strömqvist

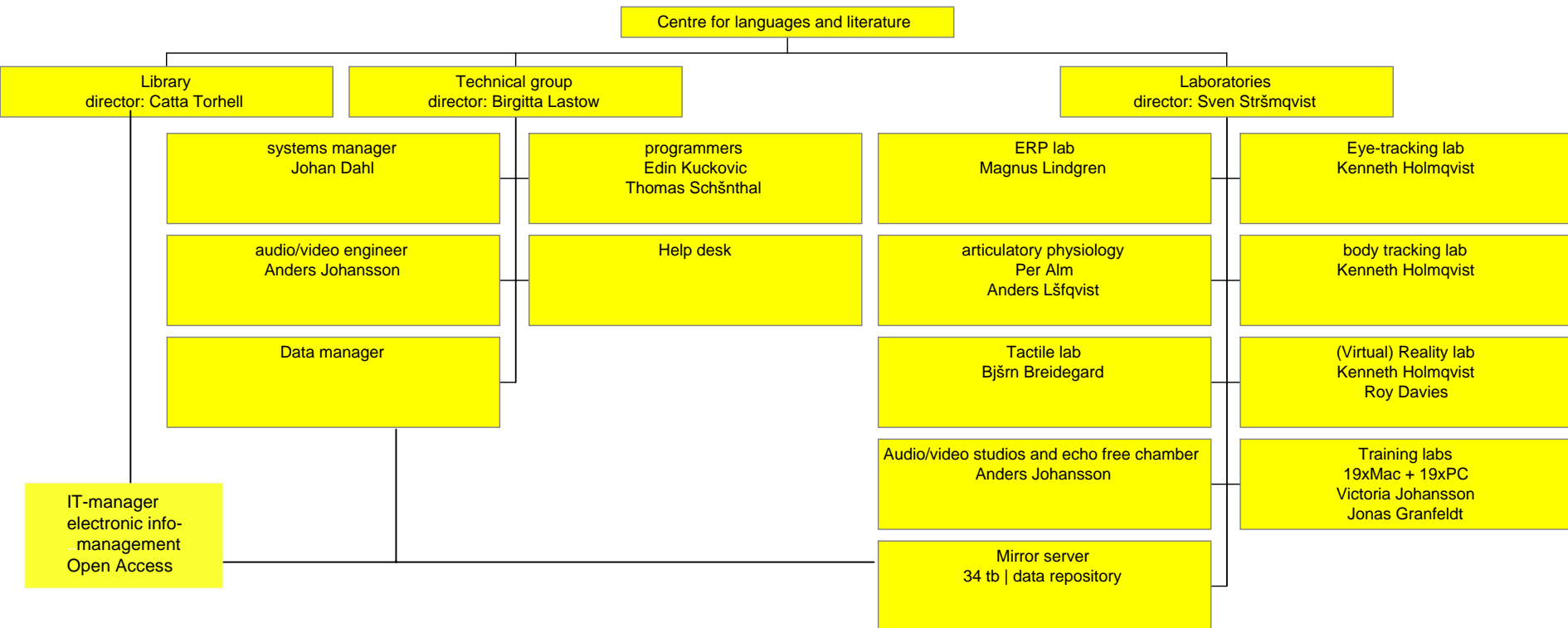
in cooperation with

Björn Breidegard, Kenneth Holmqvist, Victoria Johansson, Henrik Karlsson,
Edin Kuckovic, Marcus Uneson, Per Henning Uppstad & Åsa Wengelin

Centre for Languages and Literature, Lund University



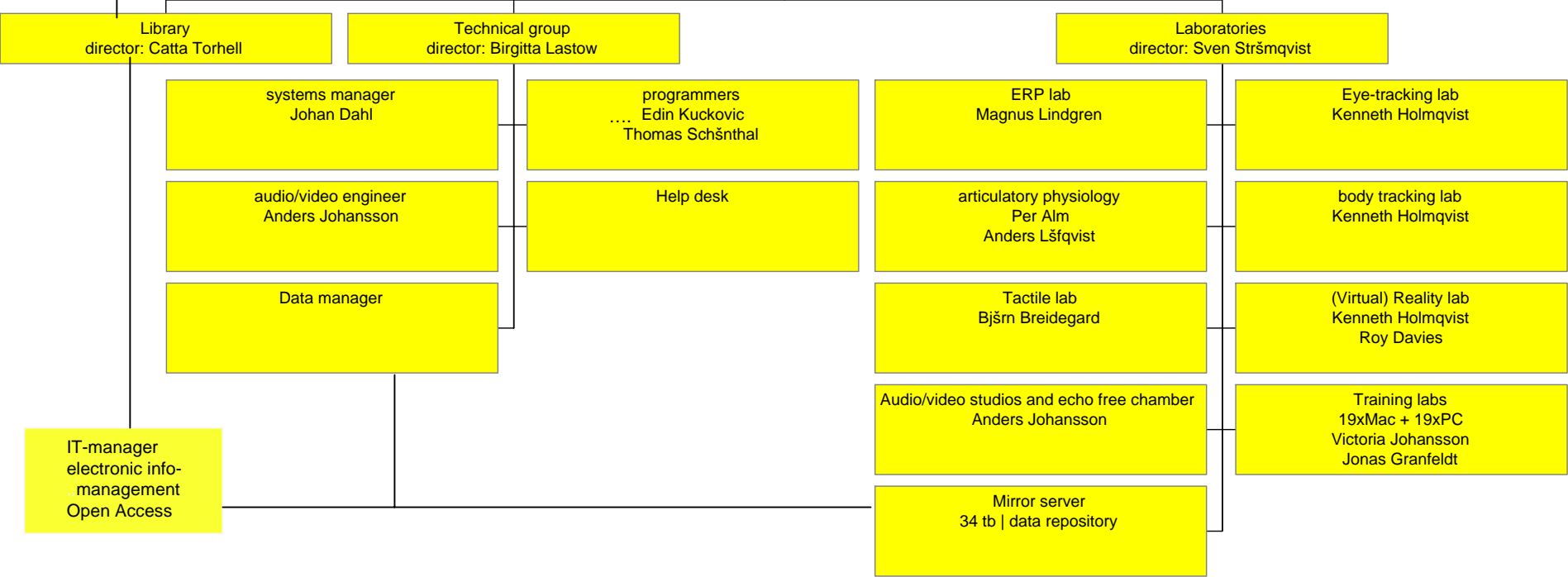
Organization of common resources



Organization of common resources

Lund University
-Library directorate
•electronic services

Centre for languages and literature



Organization of common resources

Lund University
-Library directorate
•electronic services

Lund University
- Steering Committee
- Strategic research initiatives
•Brain-Mind-Behaviour
•Centre for the study of environmental sound

Centre for languages and literature

Library
director: Catta Torhell

Technical group
director: Birgitta Lastow

Laboratories
director: Sven Stršmqvist

systems manager
Johan Dahl

audio/video engineer
Anders Johansson

Data manager

programmers
.... Edin Kuckovic
Thomas Schšnthal

Help desk

ERP lab
Magnus Lindgren

articulatory physiology
Per Alm
Anders Lšfqvist

Tactile lab
Bjšrn Breidegard

Audio/video studios and echo free chamber
Anders Johansson

Mirror server
34 tb | data repository

Eye-tracking lab
Kenneth Holmqvist

body tracking lab
Kenneth Holmqvist

(Virtual) Reality lab
Kenneth Holmqvist
Roy Davies

Training labs
19xMac + 19xPC
Victoria Johansson
Jonas Granfeldt

IT-manager
electronic info-
management
Open Access

Organization of common resources

Lund University
-Library directorate
•electronic services

Lund University
- Steering Committee
- Strategic research initiatives
•Brain-Mind-Behaviour
•Centre for the study of environmental sound

Centre for languages and literature

Library
director: Catta Torhell

Technical group
director: Birgitta Lastow

Laboratories
director: Sven Stršmqvist

systems manager
Johan Dahl

audio/video engineer
Anders Johansson

Data manager

programmers
....
Edin Kuckovic
Thomas Schšnthal

Help desk

ERP lab
Magnus Lindgren

articulatory physiology
Per Alm
Anders Lšfqvist

Tactile lab
Bjšrn Breidegard

Audio/video studios and echo free chamber
Anders Johansson

Mirror server
34 tb | data repository

Eye-tracking lab
Kenneth Holmqvist

body tracking lab
Kenneth Holmqvist

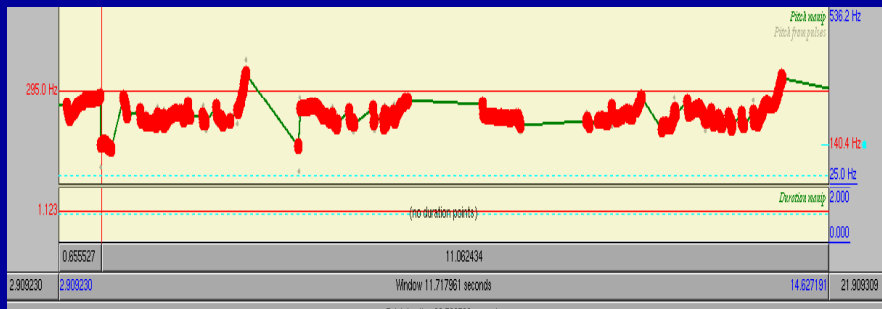
(Virtual) Reality lab
Kenneth Holmqvist
Roy Davies

Training labs
19xMac + 19xPC
Victoria Johansson
Jonas Granfeldt

IT-manager
electronic info-
management
Open Access

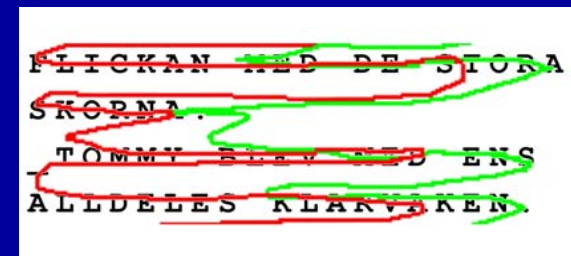
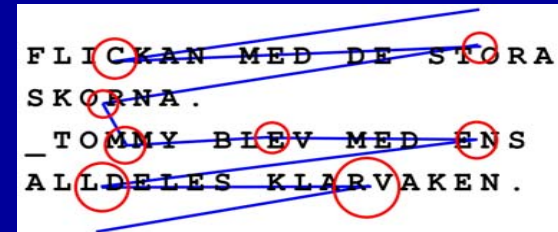
Masters programmes -
language technology -
cognitive science
Ph.D. Programmes
- Linguistics
- Phonetics
- Cgnitive Science

Name Institution	Name Researcher	Name of the Resource(s)	Type of Resource	Size of Resource	MD described	free
U Lund	Gösta Bruce	SWEDIA	Swedish dialect corpus	1200 subjects and 800 hours speech	IMDI	MD free and parts of phonetic corpus free
U Lund	Sven Strömqvist	Spencer	Cross-lg corpus of speaking and writing development in school children	600 hours speech and textwriting in sound, video and CHAT-format	50% of the corpus described in IMDI	yes
U Lund	Sven Strömqvist	ScriptLog	Cross-lg corpus of key-stroke logged writing	1000 subjects from 10 european countries		MD free
U Lund	Sven Strömqvist	Richthoff-Strömqvist corpus	Longitudinal child language corpus, Swedish	5 children and 500 000 words in CHAT-format + sound and video		
U Lund	Jordan Zlatev	Zlatev corpus	Longitudinal child language corpus, Thai	1 child, 250 000 words in CHAT-format + sound and video		
U Lund		Laurentius corpus	corpus of Medieval manuscripts	6000 digitized pages		
Utbildningsstyrelsen, Helsinki	Gun Oker-Blom	Språkforum	Speaking and online writing in bilingual children (Swedish/Finnish)	Speech and writing from 100 children on 5 occasions	IMDI on its way	yes
University of Stavanger	Per Henning Uppstad	H community study	Key-stroke logged writing from school children (native as well as immigrant)	500 texts	IMDI on its way	yes



Speech Reading/ Writing visual tactile

<START><105.48>det <3.06>var en
<3.95>dag<DELETE14> Detta hände
<9.36>för unge fär 3 mån<DELETE>nader
sen<3.66>.







Cal. Area:
8 11
320 500

_ ANNIKA VAKNADE TIDIGT
NÄSTA MORGON. HON
SKJUTTADE KVICHT UR
SÅNGEN OCH TRASKADE BORT
TILL TOMMY.

-- _ VAKNA. _ TOMMY. SA
HON OCH RYCKTE HONOM I
ARMEN. VAKNA OCH LÅT OSS
GÅ TILL DEN SKOJIGA
FLICKAN MED DE STORA
SKORNA.

_ TOMMY BLEV MED ENS
ALLDELES KLARVAKEN.

-- _ JAG VISSTE NÅR JAG
LÅG OCH SOV ATT DET
SKULLE HÄNDA NÅGOT
ROLIGT IDAG. FAST JAG
KOM INTE IHÅG VAD DET
VAR. SA HAN OCH KRÄNGDE
AV SIG PYJAMASJACKAN.

_ SEN BAR DET AV IN I
BADRUMMET MED DEM BÅDA
TVÅ.

VOLUME 2

RELATING EVENTS IN NARRATIVE

Typological and Contextual Perspectives



Edited by
Sven Strömqvist
Ludo Verhoeven

Appendix IIc: Languages Covered by Frog Story Studies

A typological overview of the languages covered by research using *Frog, where are you?*

Phylum	Group	Language		
Niger-kordofanian	Niger-Congo	Ewe Kgalagadi Myene		
Nilo-saharan	Nilotic	Acholi Alur Dhopodhola Lango		
Afro-asiatic	Semitic	Arabic Hebrew*		
Indo-hittite	Greek	Greek		
		Italic	French Galician Italian Portuguese Romansh Spanish*	
	Celtic		Irish	
			Germanic	Dutch English* German Icelandic* Norwegian Swedish* Yiddish
	Balto-Slavic			Bulgarian Polish Russian

Phylum	Group	Language
Uralic-yukaghir	Finno-Ugric	Estonian
		Finnish
		Komi
		Mari
		Mordvinian
		Udmurt
		Veps
Altaic	Turkic	Turkish*
	Korean	Korean
	Japanese-Ryukyuan	Japanese*
Eskimo-aleut	Inuit	Greenlandic
Elamo-draavidian	Dravidian	Tamil
Sino-tibetan	Sinitic	Cantonese
		Mandarin
	Tibeto-Burman	Baragaunle
		Chantyal
		Ghale
		Magar
Austric	Austronesian	Fijian
		Kilivila
		Longgu
		Malay
		Samoan
	Daic	Thai*
Indo-pacific	Trans-New Guinea	Yupno

Phylum	Group	Languages
Australian	(D)Jamin(D)Jungan Pama-Nyungan	Jaminjung (Djamindjung) Alyawarra Arrente* Gangu Yumithirr Warlpiri*
Amerind	Almosan-Keresiouan Andean Penutian	Kickapoo Lakhota Saliba Mopan Totonac Tzeltal* Tzotzil Yucatec
Language Isolates		Basque*
Pidgins And Creoles	Portuguese-Based	Papiemento
Other		American Sign Language* British Sign language Nicaraguan Sign Language Sign Language of the Netherlands