

IMDI Browser, web version

User Guide

Last updated: 2008-05-24

The latest version can be downloaded from www.mpi.nl/lat/tools/imdi/browser/

IMDI Browser, web version: User Guide

User Guide

N. Wood (nick.wood@mpi.nl [mailto:nick.wood@mpi.nl]) and J. Ringersma (jacquelij.n.ringersma@mpi.nl [mailto:jacquelij.n.ringersma@mpi.nl])

Last updated: 2008-05-24

The latest version can be downloaded from www.mpi.nl/lat/tools/imdi/browser/

Table of Contents

Introduction	iv
1. Navigating the IMDI Browser web version	5
1.1. The Browse Panel	6
2. Menu	8
2.1. Annotation Content Search	9
2.2. Create Bookmark	10
2.3. Download	10
2.4. Metadata Search	10
2.5. Request Access Rights	13
2.6. Set Access Rights	13
2.7. Version Info	13
2.8. View Images	13
2.9. View Node	14

Introduction

This guide is an introduction to the IMDI Browser (web version). This browser is a tool to view the structure of the archive, search and read the metadata. Users with access rights may further search the annotations and download resources.

There is also a stand-alone version of the IMDI browser, which you can use to view and search archives stored on a local PC or laptop drive. The basic principles of the stand-alone version are the same as for the IMDI web browser, maybe with some slight differences. Here we will only discuss the functionalities of the web browser.

Chapter 1. Navigating the IMDI Browser web version

The IMDI web browser is part of the Language Archiving Technology suite. You will find a link to the browser on the LAT web page <http://www.lat-mpi.eu/tools/imdi/browser/> (see Figure 1.1). The IMDI web browser can also be accessed directly at <http://corpus1.mpi.nl>.

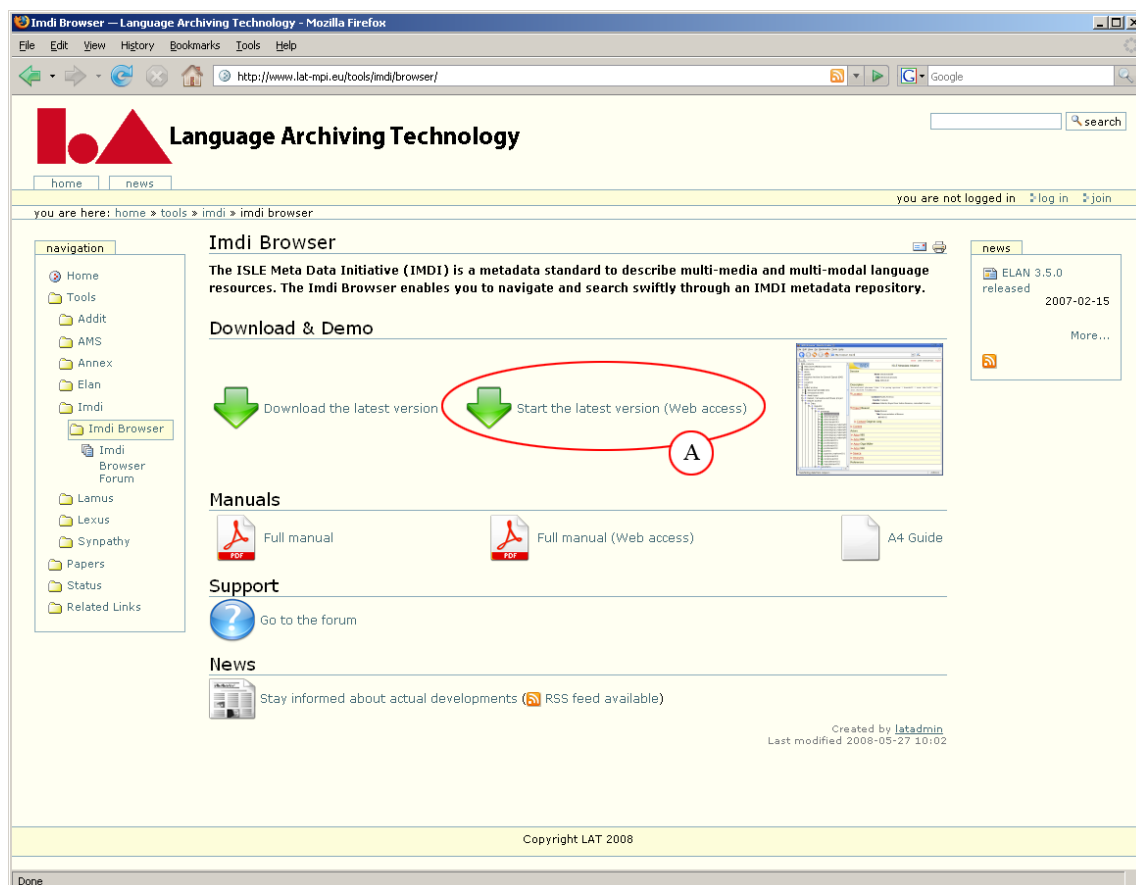


Figure 1.1. LAT page: Link to IMDI web Browser (A)

Since the IMDI web browser is an online tool, it does not need to be installed, but you will need Java installed on your machine for it to run. For more information on Java and how to install it <http://java.com/en/>.

Figure 1.2 shows the main page view of the IMDI web browser; the layout of the browser is divided into the Browse Panel and the Content Panel. The Browse Panel gives an overview of the archive in a tree structure. The Content Panel represents the content of the node that you have active in the tree.

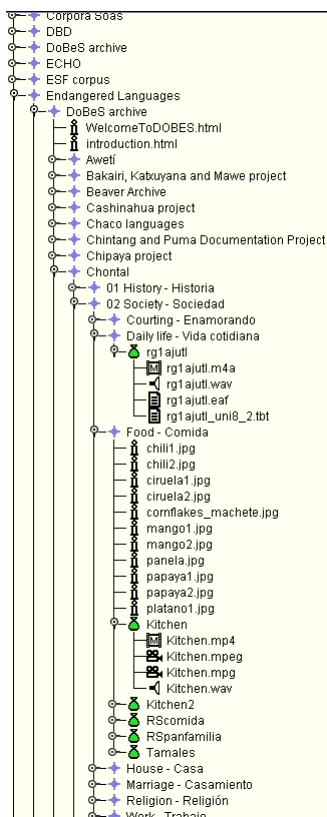


Figure 1.3. Browse Panel detail



Switch (closed): A switch represents a Corpus node or a Session node that has child elements. When the switch is in the closed position you are unable to view the child elements of the associated node



Switch (open): In the open position the child elements of the node are visible



Corpus node



Session node: The session node represents the IMDI metadata file. The IMDI file is the main body of the session that the resource files link to.



Media resource File - Video (mpeg4)



Media resource File - Video (mpeg1 & 2)



Media resource File - Audio (wav)



Media resource File - Image (jpeg)



Written resource File (eaf, tbt, txt)



Information file

Chapter 2. Menu

All functionalities of the IMDI web browser are selected from right click menus¹. The menu under the right mouse click is context dependent, meaning that you will get a different menu under a corpus node, a session node or a resource node. Figure 2.1 gives a view of the right click menu under a session node. In the view, the option view node is selected. This gives a full view of the content of the IMDI metadata file in the Content Panel.

The menu options are:

- Annotation Content Search
- Create Bookmark
- Download
- Metadata Search
- Request Resource Access
- Set Access Rights
- Version Info
- View Images
- View Node

¹To write this guide the browser was operated using the Microsoft Windows XP Professional operating system. If you do not use this operating system then you need to use whatever the right click equivalent of your operating system is.

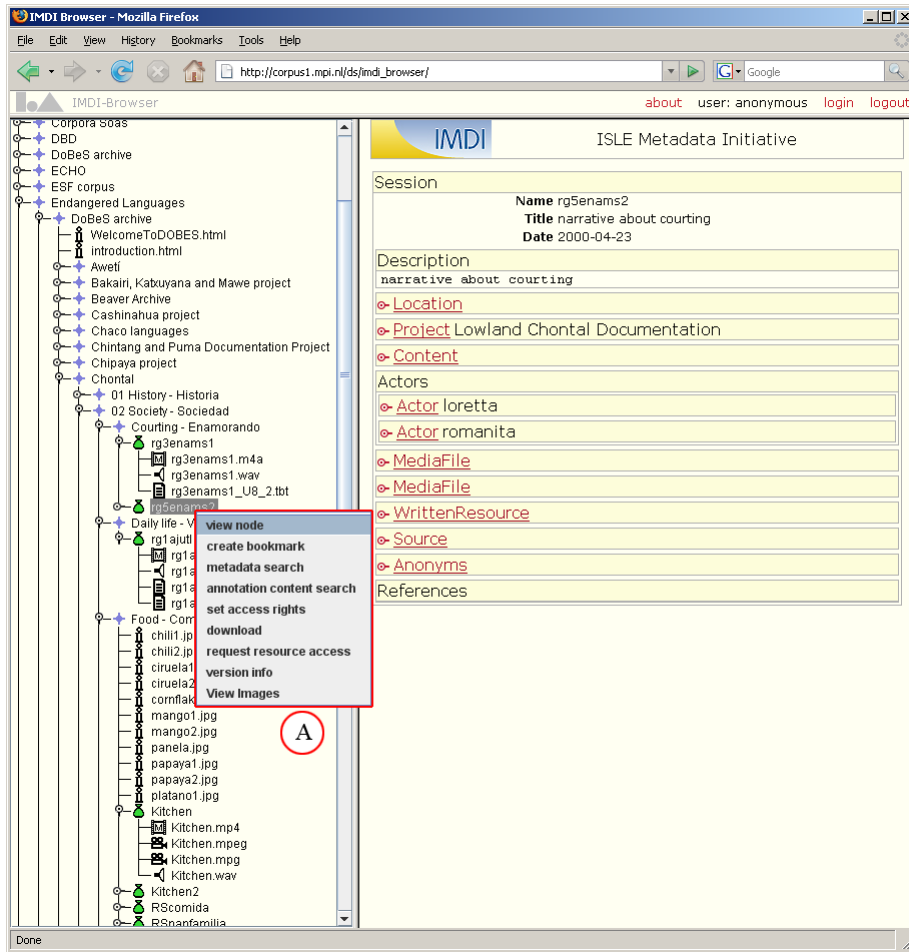


Figure 2.1. Right click option under session node

2.1. Annotation Content Search

With Annotation Content Search, you may search in the content of the written resource files. Remember that resource files are generally not open for anonymous users. You may only search those files for which you have access rights. When you choose this option from the menu the content search engine (ANNEX) will display the number of resources that will be searched (Figure 2.2). You need to log in to search through all files available to you.

A manual and help page for ANNEX already exists. Select the online help option (A) to open the manual.

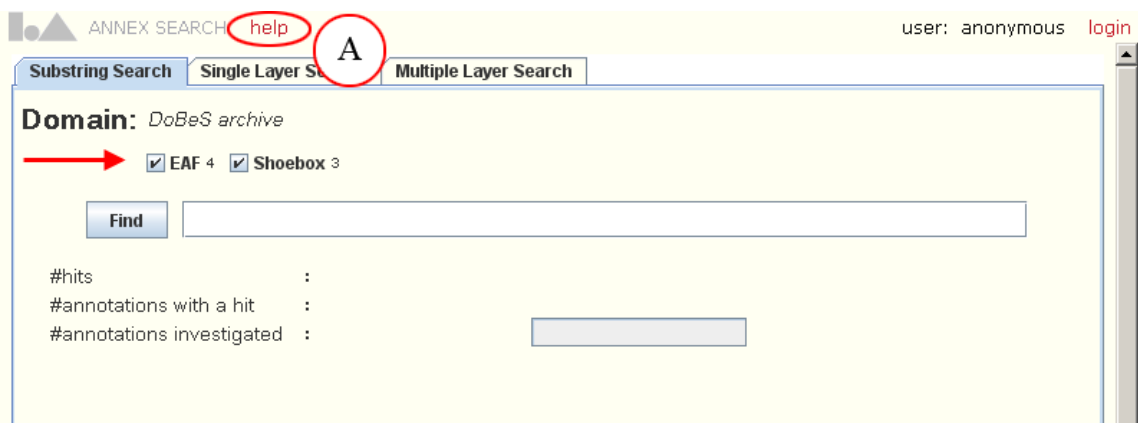


Figure 2.2. Annotation Content Search

2.2. Create Bookmark

Creating a bookmark in the browser is the same as it is in your web browser. You may bookmark the location of individual resources or of corpus or session nodes. When you need to bookmark a point in the corpus, you right click and select Create Bookmark (Figure 2.3 A).

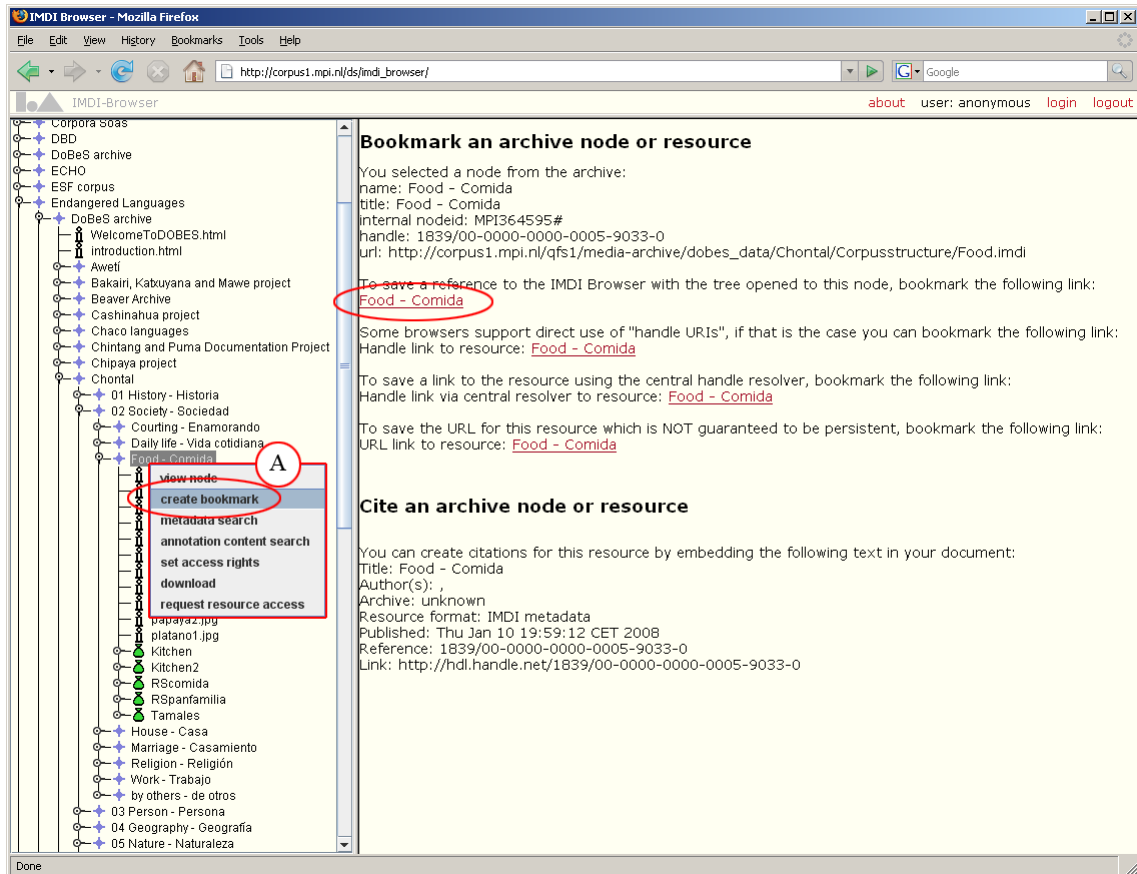


Figure 2.3. Creating a bookmark

Only one of the given options is relevant for you now, the top one indicated with B in Figure 2.3. Click the link under ‘To save a reference to the IMDI browser with the tree opened to this node...’. In the address field of the browser a persistent url location to the resource will be displayed. Now add the url to your favorites or bookmarks in the browser menu.

2.3. Download

The Download option allows you to save a copy of the file to a selected location. All metadata in the corpus is open source, so you can download all IMDI files. Resource files on the other hand are password protected, so you will not be able download any resources unless you have access rights to the resource.

2.4. Metadata Search

Metadata Search is an option that allows you to search through all the IMDI files from a selected node down. When you first open the Metadata Search, there are three search options: Keyword Search, Standard Search and Advanced Search. There is also a count of how many sessions there are from the selected node down.

Keyword Search:

This search is if you are not sure of the content of the corpus and just want to make generic wide searches on specific words, from the highlighted node down (Figure 2.4)

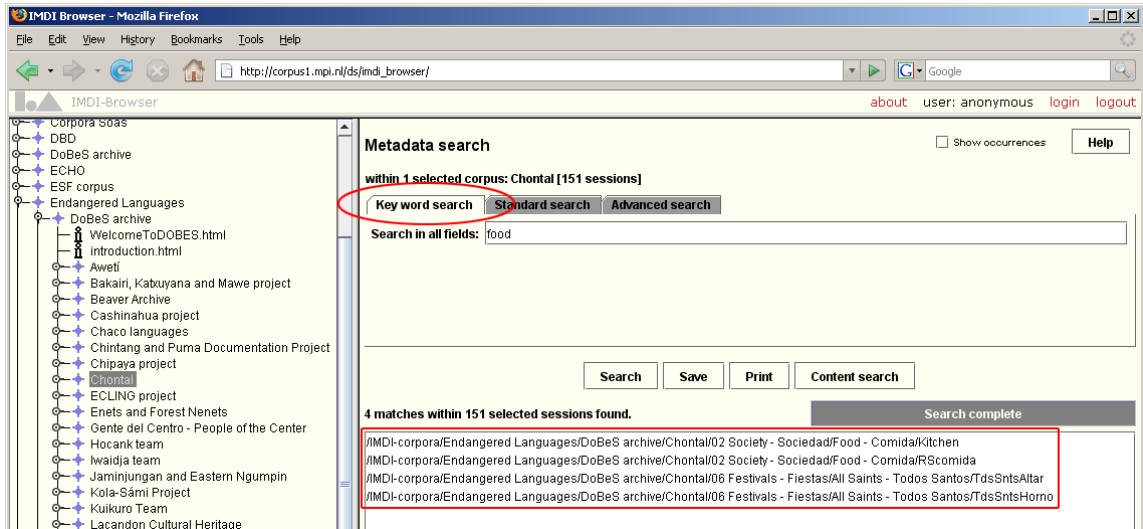


Figure 2.4. Metadata Search – Keyword Search

In Figure 2.4, the Chontal Corpus Node is selected as the top node for a keyword search. The keyword ‘food’ is entered into the search field. The search results in four hits on session files in the corpus. These are sessions with the word ‘food’ somewhere within the metadata.

Standard Search:

This search is a basic search where you choose from drop-down selections to populate the data for your query (see Figure 2.5 A, B). In standard search, you are able to search in three fields of the metadata file only: Content Language Name, Country and Content Genre. The allowed search values are given by drop down lists, which correspond with the controlled vocabularies of the IMDI editor for these fields.

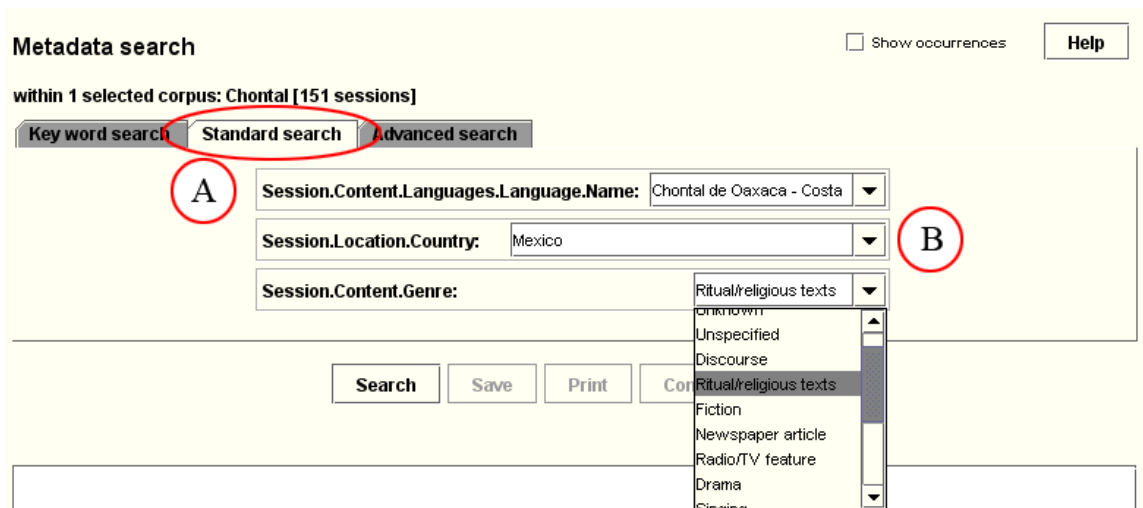


Figure 2.5. Metadata Search - Standard Search

Advanced Search:

In Advanced Search, the structure of the metadata file is the basis for the search. Figure 2.6 shows the most basic option of Advanced Search:

it shows two dropdown selections (A) and a free-text field (B). This search is on session name only; any text you enter into the free-text field will only search the session name field of your selected section of the corpus.

Metadata search Show occurrences **Help**

within 1 selected corpus: Chontal [151 sessions]

Key word search **Standard search** Advanced search

Session Name

A **B**

Figure 2.6. Metadata Search - Advanced Search 01

The second drop down list offers: Names, Title, Date, Location, Project, Keys, Content, Actor, Resources and References. Choosing one of these will extend the search option following the structure of the metadata file.

Figure 2.7 shows a two-constraint search: the first constraint searching on Location, Country, Mexico, and the second on Resources, MediaFile, Format, video/x-mpeg4. Run from the Dobes node, this search locates 56 results from a total 6865 potentials.

Metadata search Show occurrences **Help**

within 1 selected corpus: DoBeS archive [7007 sessions]

Key word search **Standard search** Advanced search

Session Location Country Mexico

Session Resources MediaFile (X) Format video/x-mpeg4

56 matches within 7007 selected sessions found. < 1-50 > Search complete

/IMDI-corpora/Endangered Languages/DoBeS archive/Lacandon Cultural Heritage/Documentation/Monologues/Narratives/ChakXok_KM
 /IMDI-corpora/Endangered Languages/DoBeS archive/Lacandon Cultural Heritage/Documentation/Monologues/Narratives/Chak_Xok_BM
 /IMDI-corpora/Endangered Languages/DoBeS archive/Lacandon Cultural Heritage/Documentation/Monologues/Narratives/ChukTunu7_KM
 /IMDI-corpora/Endangered Languages/DoBeS archive/Lacandon Cultural Heritage/Documentation/Monologues/Narratives/Creation_SK
 /IMDI-corpora/Endangered Languages/DoBeS archive/Lacandon Cultural Heritage/Documentation/Monologues/Narratives/Dog_Croc_SK
 /IMDI-corpora/Endangered Languages/DoBeS archive/Lacandon Cultural Heritage/Documentation/Monologues/Narratives/Frogstory_BM
 /IMDI-corpora/Endangered Languages/DoBeS archive/Lacandon Cultural Heritage/Documentation/Monologues/Narratives/Frogstory_BMjr
 /IMDI-corpora/Endangered Languages/DoBeS archive/Lacandon Cultural Heritage/Documentation/Monologues/Narratives/Frogstory_CKD
 /IMDI-corpora/Endangered Languages/DoBeS archive/Lacandon Cultural Heritage/Documentation/Monologues/Narratives/Frogstory_Lej
 /IMDI-corpora/Endangered Languages/DoBeS archive/Lacandon Cultural Heritage/Documentation/Monologues/Narratives/Frogstory_Lor
 /IMDI-corpora/Endangered Languages/DoBeS archive/Lacandon Cultural Heritage/Documentation/Monologues/Narratives/Frogstory_NI

Figure 2.7. Metadata Search - Advanced Search 02

The (X) drop down is an option for you to search within your search results. For example, if you added a third constraint, and in that one kept it as (X), then that third constraint would only search in the results of the second constraint. If you selected another available letter, then the third constraint would also search from the top node of the query.

Search results:

No matter which type of search you use (keyword, standard or advanced) your search results will be displayed as a list of imdi metadata files (Figure 2.7).

Right clicking one of the results allows to:

1. **Show Session with Tree** opens a new browser window with the selected IMDI file highlighted in the tree
2. **Show Session** opens a new browser window with the content of the IMDI file
3. **Content search** allows to search the content of the written resource file linked to the session
4. **Show/Add Webnote(s)** opens a menu to leave 'post-its' to the resource. The option is protected for special users.

2.5. Request Access Rights

Request access rights allows you to request access to an individual resource file or the all resource files linked to a session or a corpus. When you select this option, a form will appear where you need to fill in personal information and specify the purpose of the use of the resource. When submitting, the form is sent to the MPI corpus managers for processing. You will be informed by e-mail whether and when access rights have been granted.

2.6. Set Access Rights

Set Access Rights is a link to AMS (Access Management System). This application is for Domain Managers to manage who has access to your resource files. When you select Set Access Rights, you will immediately be prompted to log in.

Download the full AMS manual in PDF format from <http://www.mpi.nl/corpus/manuals/manual-ams.pdf>

2.7. Version Info

Version Info is a new option that keeps a record of any IMDI or resource files that have been replaced or overwritten. At the time of writing, this option is not as of yet functioning.

2.8. View Images

The View Images option is a little more than an image viewer, it will also show any metadata associated with the image as well. When you select View Images on a Session Node that contains images you will be prompted for your username and password, once approved the image browser will open in a new tab (see Figure 2.8).



Figure 2.8. The Image Browser in thumbnail view

The Image Browser opens in a Thumbnail view, with a minimal metadata description for each image. To see all the metadata associated with an image double click to open it convert it to Slideshow view.

2.9. View Node

Selecting View node on a corpus or session node will display the content of the metadata file in the Content Panel. Selecting View node on a resources node will display the content of the resource file, provided that you have access rights to the resource.

Video and audio files will play in the Content Panel, where for as ELAN files the ANNEX viewer will start and display the content of the ELAN file with the associated media files. Other text resources will simply be displayed as text.