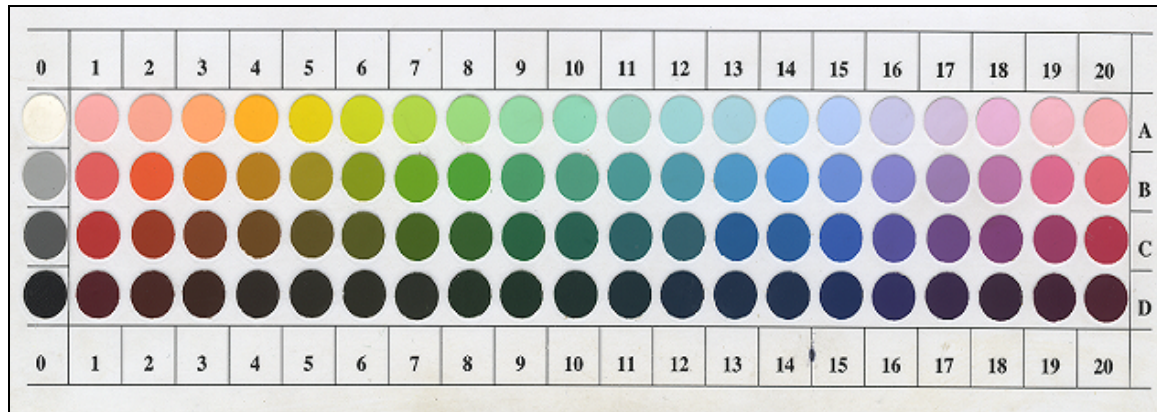


Referring to color and taste in Kilivila
Stability and change in two lexical domains of sensual perception

Results of my 2008 study on Kilivila color terms

Colors that were used in the color kit booklet:



Color terms produced in 2008 with reference to the consultant(s) who produced them and to the color stimulus described by these terms using the code for this stimulus presented in the color chart presented above:

bwabwau Cs 1,3,4,5,7,8,9 / 0D; Cs 1,3,7 / 14D; Cs 3,4,8,9 / 4D; C1 / 3D;
 Cs 1,3 / 18D; Cs 1,3,7 / 16C; C3 / 12C; Cs 3,7 / 17C; Cs 1,3,4 / 8D;
 Cs 3,7 / 15D; Cs 1,3,7,9 / 16D; Cs 4,8 / 7D; Cs 3,4,7 / 13D;
 Cs 1,3,4,7,8,9 / 6D; Cs 1,3,4,7 / 17D; Cs 1,3,7,9 / 5D; C7 / 11C;
 C 7 / 12D; C 3 / 11D; C 3 / 10D; C 3 / 9D.

Four consultants (Cs 2,10,11,12) did not produce this term;
 they produced "**black**".

pubwakau Cs 1,3,4,5,7,8,9,12 / 0A; Cs 1,3,4,7,8,9,12 / 16A; C9 / 18A; C3 / 13A;
 Cs 1,3,4,8,9,12 / 17A; C3 / 12A; C4 / 16B; C3 / 15B; Cs 1,3,4,9 / 15A;
 C4 / 12B.

Four consultants (Cs 2,6,10,11) did not produce this term;
 they produced "**white**".

- bweyani** C9 / 18C; Cs 1,5,7,9 / 20B; Cs 1,3,4,5,6,7,8,9 / 1C; C7 / 19B;
Cs 1,3,4,5,7,9 / 19C; Cs 1,3 / 3B; Cs 1,3,4,5,7,8,9,12 / 2C; C3 / 1A;
Cs 3,4 / 18B; Cs 3,4,5 / 20D; C 3 / 2D; C3 / 20A; Cs 1,3,5,7,9,12 / 1B;
Cs 1,3,4,5,7,9,12 / 20C; Cs 1,3,4,5,7,9,12 / 2B; C3 / 2D.
Three consultants (Cs 2,10,11) did not produce this term;
they produced "**red**".
- kwinin** Cs 7,8,9 / 6A; Cs 7,9 / 7A; Cs 7,8,9 / 5A; C 7 / 6B; C 7 / 5B;
Cs 7,8 / 4A.
- digadegila** C 4 / 6A; C 5 / 4B; C 4 / 3A; C 5 / 14A; C 4 / 13A; C 4 / 12A; C 4 / 6B;
Cs 4,12 / 4A.
Six consultants (Cs 1,2,3,6,10,11) did not produce any of these two
terms; they produced "**yellow**".
- black** Cs 2,3,6,10,11,12 / 0D; C 12 / 4D; C 3 / 7D; C 12 / 13D;
Cs 2,11,12 / 6D; C 12 / 5D;
Thus, six consultants (Cs 2,3,6,10,11,12) produced this term.
- white** Cs 2,6,10,11 / 0A; Cs 10,11 / 17A; Cs 2,6,10,11 / 16A.
Thus, four consultants (Cs 2,6,10,11) produced this term.
- red** C 3 / 20B; Cs 2,10,11,12 / 1C; Cs 2,12 / 19C; Cs 2,10 / 2C; C 11 / 1B;
Cs 2,6,10,11 / 20C.
- light red** C 11 / 20B; C 11 / 1D; C 11 / 19C; C 11 / 2C; C 11 / 20D; C 10 / 1B.
- dark red** C 10 / 20B; C 10 / 1D; C 10 / 20D.
- pink red** C 12 / 1D.
Thus, six consultants (Cs 2,3,6,10,11,12) produced these terms.
- yellow** Cs 1,2,3,4,11,12 / 4B; Cs 2,12 / 7A; C 12 / 3A;
Cs 1,2,4,5,6,10,11,12 / 5A; C 12 / 2A; Cs 2,12 / 3B; Cs 2,12 / 6B;
C 12 / 1A; C 2 / 5B; C 12 / 3A; C 12 / 20D; C 12 / 20A;
Cs 1,2,5,6,10,11 / 4A.
- light yellow** C 11 / 6B; C 11 / 5B; C 11 / 4C.

dark yellow C 10 / 6B; C 10 / 5B.

pink yellow C 12 / 18A.

Three consultants (Cs 7,8,9) did not produce any of these terms.

botova C 4 / 3D.

dararugu C 7 / 18C; C 7 / 20D.

gana'ugwa Cs 7,8 / 4B; C 9 / 2A; Cs 7,8 / 3B.

oravera C 4 / 12C; C 4 / 9A; C 4 / 3B.

veravera C 9 / 14A.

semtamata C 1 / 7D.

soso'u C 4 / 17A; C 5 / 0B; C5 / 16A.

Thus, these terms were produced by six consultants (Cs 1,4,5,7,8,9).

kwegulini Cs 4,5 / 10C; C 4 / 11A; C 4 / 7C; C 4 / 9B; C 4 / 10A; C 4 / 12D;
C 4 / 9C

gulini C 4 / 8C; C 4 / 8B; C 4 / 7B; C 4 / 13C; C 4 / 11B; C 4 / 11D, C 4 / 10D
These terms were produced by two consultants (Cs 4,5).

green Cs 1,2,3,6,7,8,10,11,12 / 10C; C 3 / 6A; Cs 1,12 / 11A; Cs 5,6,11 / 7C;
Cs 2,3,5,7,10,11 / 9B; C 12 / 14B; Cs 2,5,10,12 / 10A; Cs 5,11 / 7A;
Cs 1,2 / 12D; C7 / 19B; C 3 / 18A; Cs 1,2,5,6,7,10,11,12 / 9C;
C 3 / 5A; Cs 5,10 / 12C; Cs 2,3,5,6,7,10,12 / 10B; C3 / 2A; C 1 / 15D;
C 5 / 7D; C 2 / 12A; Cs 1,3,7 / 15C; Cs 3,5 / 13B; Cs 1,5 / 13D;
C 12 / 15B; C 3 / 6B; Cs 1,7,12 / 14C; Cs 1,2,7 / 13C; Cs 3,12 / 5B
Cs 2,5,7,10,11 / 8C; Cs 2,3,5,10 / 8B; Cs 10,11,12 / 7B; C12 / 8D;
Cs 3,4,10,12 / 9A; Cs 2,3,5,6,10,11,12 / 11B; Cs 1,2,3,5,10 / 11C;
C 3 / 4A; Cs 2,5,7,8 / 11D; Cs 2,3,5 / 8A; Cs 1,2,5,7,10 / 10D;
Cs 1,2,5,6,7 / 9D; Cs 3,5,10,11 / 12B; C 3 / 4C.

light green C 6 / 11A; Cs 6,8 / 9B; Cs 6,11 / 10A; C 8 / 7A; C 11 / 6C; C8 / 9C;
C 11 / 13A; C 11 / 10B; Cs 6,11 / 8B; C 6 / 7B; C 11 / 8D; Cs 6,11 / 9A;
C 11 / 11C; Cs 6,10,11 / 8A; C 11 / 9D; C 2 / 12B.

dark green Cs 10,11 / 11A; Cs 6,10 / 7C; C 12 / 14D; C 10 / 7A; Cs 6,10 / 6C;
C 10 / 14A; C 10 / 13A; C 6 / 8C; C 2 / 7B; Cs 2,6,10 / 8D; C 10 / 12A;
Cs 2,10 / 13B; C 10 / 6D; C 2 / 9A; C 6 / 11C; Cs 6,10 / 11D; C 6 / 10D;
C 10 / 9D.

These terms were produced by all consultants.

blue C12 / 7C; Cs 4,5,6,8,10,11 / 14D; C 12 / 9B; Cs 2,4,5,11 / 14B;
Cs 5,12 / 12D; Cs 2,4,12 / 14A; C 4 / 16C; C 12 / 8C; C 12 / 8B;
C 5 / 3B; Cs 2,4,6,8,10,11,12 / 15D; Cs 2,4,5,6,10,11,12 / 15C;
C 12 / 13B; C 2 / 15B; Cs 2,4,5,6,8,10,11 / 14C; Cs 5,10,12 / 13C;
C 12 / 10D; C 12 / 9D;

light blue C 8 / 12D; C 11 / 14A; C 11 / 12C; C 11 / 16B; C 8 / 15C; C 12 / 11C
Cs 6,11 / 13B; Cs 6,11 / 15B; Cs 6,11 / 13C; C 2 / 15A; C 11 / 11D;

dark blue C 2 / 14D; C 10 / 14B; C 12 / 18D; C 10 / 12D; C 8 / 16C; C 2 / 12C;
C 8 / 8D; C 8 / 16D; Cs 8,10 / 13D; C 10 / 15B.

sky blue C 6 / 14B; C 6 / 14A; C 6 / 12A; C 6 / 15A; C 6 / 12B.

pink blue C 12 / 16C.

indigo C 2 / 16D; C 2 / 16B.

Four consultants (Cs 1,3,7,9) did not produce any of these terms.

orange Cs 2,4 / 20B; C 10 / 4B; C 3 / 10A; C 8 / 3A; C 2 / 2B; C 2 / 19B;
C 3 / 9C; Cs 4,8 / 2A; C3 / 7B; Cs 10,11 / 3B; C 2 / 1A; C 4 / 1B.

light orange C 10 / 2B; C 2 / 18A; C 11 / 2A;

dark orange C 3 / 5C;

Five consultants (Cs 1,6,7,9,12) did not produce any of these terms.

brown C11 / 5C; C 12 / 11D; Cs 2,4,5,8,10,11,12 / 2D; Cs 2,5,10,11 /
4D;

Cs 2,5,6,10,11 / 3D; Cs 5,12 / 4C; Cs 4,5,10 / 3C; C 11 / 7D;
C 4 / 19A; C 12 / 17D; Cs 2,4,5,10,11 / 5D; C 2 / 6D; C 2 / 20D;
C 2 / 1D.

light brown Cs 2,6,8,10 / 4C; C 6 / 3C.

dark brown Cs 2, 10 / 5C; C 6 / 4D; C 8 / 3D; C 2 / 3C; Cs 2,10 / 7D.

Four consultants (Cs 1,3,7,9) did not produce any of these terms.

purple Cs 2,4,5,6 / 18C; Cs 1,3,4,5,7,9,11,12 / 19D; Cs 2,10 / 18D; C 4 / 19B;
Cs 10,11 / 16C; C 4 / 1D; Cs 4,6,8,10 / 17C; Cs 6,10,11 / 16D;
Cs 4,5 / 1A; C 10 / 17B; Cs 8,10 / 17D; C 6 / 20D; C 4 / 20A.

light purple C 11 / 17C; C 6 / 19C.

dark purple C 10 / 18C; C 2 / 17A; C 6 / 18D; C 10 / 16B; C 10 / 18B; C 6 / 17D.

These terms were produced by all consultants.

violet C 2 / 16C; C 2 / 17C.

One consultant (C 2) produces this term.

pink C 8 / 18C; C 4 / 18D; Cs 2,11 / 3A; C 11 / 2B; C 5 / 19A; C 5 / 18A;
Cs 8,10 / 19C; C 5 / 8D; Cs 2,5 / 18B; C 2 / 17B; Cs 2,11 / 17D;
Cs 2,5 / 20A; C 2 / 1B; C 8 / 20C.

light pink C 11 / 19A; C 10 / 2A; C 11 / 17B; C 10 / 20A.

dark pink C 11 / 18C; C 10 / 3A; C 10 / 19B; C 10 / 1A.

These terms were produced by six consultants (Cs 2,4,5,8,10,11).